

## Usage precautions

- Do not use the product on problem areas with wounds, swelling or rashes.
- Pay close attention while using the product to see if your skin experiences problems. Stop using the product if it does not suit your skin.
  - ① If you experience redness, swelling, itching, irritation, loss of color (e.g. white blotches) or darkening during use
  - ② If the above conditions appear after your skin is exposed to direct sunlight We recommend you consult your dermatologist. Continuing to use the product may worsen these symptoms.
- Use caution to avoid the product from getting in your eyes while rinsing off from hair. If the product gets into your eyes, rinse immediately with plenty of water. Consult an ophthalmologist if discomfort persists.
- Do not use on parts other than head hair, such as eyebrows and eye lashes.

## Caution on staining

- Always wear gloves because the product will stain your nails
- Be careful not to color clothing, floors, walls, mirrors and bathtubs.
- Before use, wet the bathtub, floor, walls, etc. by showering the surfaces to make it easier to remove color.
- Wash off any stains on containers, etc. after use. If left unwashed, surrounding areas may become stained and unable to be cleaned off.
- Remove glasses, contact lenses, and accessories.

### To prevent the product from getting on clothes, etc.

- Insufficient rinsing may cause coloring of towels, clothes, hats, pillow cases and other items.
- Color may come off when hair is left wet after use. We recommend blow-drying thoroughly.
- When going to bed, dry your hair thoroughly and protect your pillow with a towel that you don't mind staining.

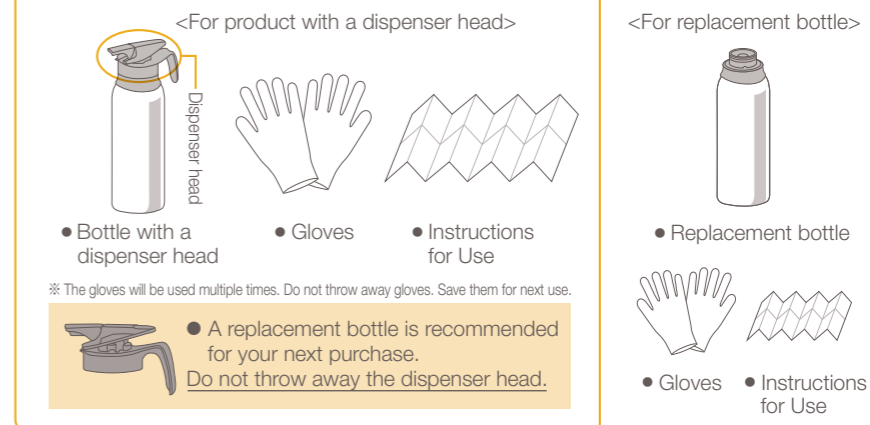
### If product colors surfaces

- For clothes and towels, wash immediately. If it is difficult to remove, we recommend using bleach.
  - Immediately wash the bathtub, tiles, floors, walls and mirrors if the product gets on these areas. If color remains, clean with a bathroom detergent, etc.
- ※ The product may not come off some clothing and bathroom materials.


## Storage precautions

- Carefully select the place to store the product in order to prevent children, people with dementia and others from accidentally swallowing the product.
- Do not store product under direct sunlight.
- If alkaline solution such as mold remover gets on the bottle, rinse thoroughly. If left as is, there is a risk that the bottle may become damaged and pose danger.
- Keep away from areas with temperatures of 40°C or higher.

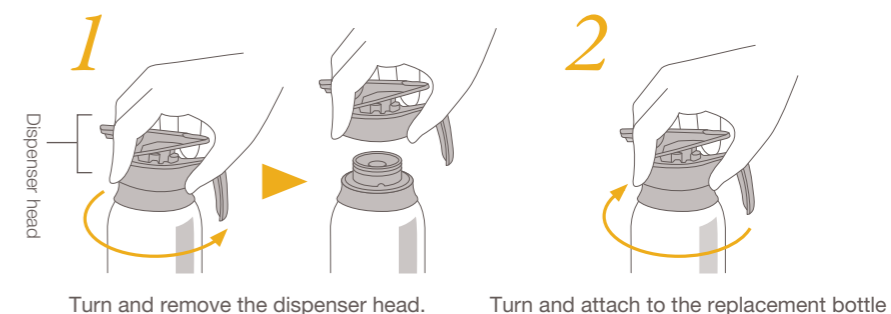
### Items included in the box



### Items not included in the box

- Towel (towel that you don't mind staining) 

### How to replace the dispenser head



## Other cautions

- This is not a hair color product.
- Hair will return to its previous shade in 1 to 2 months after stopping usage.
- Because the product does not bleach, hair cannot be dyed to a lighter color than its previous shade.
- The finish depends on the amount of gray hair, original hair color and hair type.
- Perming after use may cause the colorant to come off. Use the product again if the color fades.
- The hair color of a temporary hair dye may fade when this product is used.
- The second and subsequent uses may cause the product to appear black in color, but this does not affect the effectiveness of the product.
- Avoid using the product in public bathrooms, etc., as it may cause inconvenience to others around you due to staining, etc.
- This product is not drinkable (edible).

#### For inquiries and opinions on the product

Kao Consumer Communication Center 2-1-3 Bunka, Sumida-Ku, Tokyo 131-8501  
☎ 0120-165-692 <http://www.kao.co.jp/rerise/>

#### Kao Corporation

1-14-10 Nihonbashi Kayabacho, Chuo-ku, Tokyo 103-8210

※ Make sure to empty the bottle before disposing of it. The dispenser head is plastic, and the can is aluminum.

プロ-ネ  
Blauē

リライズ  
Rerise

Hair dye dispenser  
for gray coverage

## How to Use

With this product, gray hair will gain shade every time the product is used.

To change gray hair  
to your desired shade

Use **around 3 times**  
**per week**, up to once a day.

Because gray hair gradually  
becomes less noticeable, it may be  
difficult to notice change after one  
or two uses.

For immediate  
gray coverage  
results, use for  
3 consecutive days  
(once a day).

After attaining  
your desired finish

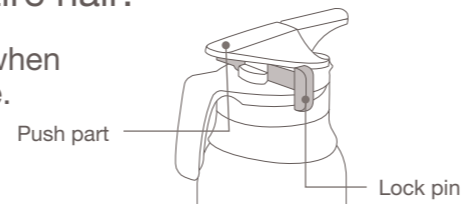
To maintain  
your desired finish,  
continue to use the product  
**about once**  
**a week**

**1** After rinsing off shampoo, squeeze moisture from your hair so that water will not drip.

- Wiping off excess moisture will leave hair more evenly colored.

**2** Wearing gloves, take a **ping pong ball-sized amount** on your hand and apply from the hair roots of gray hair. Repeat several times to spread over the entire hair.

1. Pull out the lock pin when using for the first time.



2. Press the push part to release the solution.

- ※ The solution will dispense slower as less product remains in the bottle.
- ※ If cold temperatures cause difficulty dispensing the product, immerse the bottle in lukewarm water for a few minutes.



The product will continue to dispense while pressed.

3. Take a **ping pong ball-sized amount** on your hand and apply from the **hair roots of gray hair**. Repeat several times to spread over the entire hair.

Insufficient application may result in insufficient effects.



### Appropriate usage amount



Number of ping pong ball-sized amounts

**For short hair overall**

Ping pong balls:  
3 to 4 balls

**For mid-length hair overall**

Ping pong balls:  
About 5 balls

One bottle is enough for about 4 uses for short hair overall (about 5 times for a replacement bottle).

※ Color of the solution differs from the final hair color.



※ The product may also be used on dry hair. Apply an appropriate amount to areas of concern such as hair partings and around the face, blend thoroughly into hair, leave on for 5 minutes, rinse well, and rinse thoroughly after shampooing.

**3** Leave the product on hair for **5 minutes** after applying.

- Check that your surroundings are not colored. If the product got on surfaces, wipe off or thoroughly rinse off.



**4** Rinse **thoroughly from the roots** until there is no more color in rinsing water.

※ There is no need to shampoo again.

- Insufficient rinsing may cause coloring on towels and other surfaces.
- If you wish to use conditioner or treatment afterwards, use it after rinsing off the product.



**5** After wiping with a towel that you don't mind staining, **dry hair thoroughly**.

※ Wet hair may cause coloring on clothing, pillowcases, etc.

- Finish by thoroughly drying with a hair dryer.

### Handy tips!

For users of Volume Finish

#### Tips to leave hair with more volume

Rake hair up from the roots and blow-dry by moving your fingers in a zigzag motion and blow air firmly to the roots. Finish with cool air to keep your hairstyle longer.



See the video for how to use the product (Will go to YouTube. Video in Japanese only)



For users of Controlled Finish

#### Tips to leave hair more controllable

Insert fingers from the inside and run them through the hair in a circular motion toward the ends, applying the hair dryer in tandem with the movement of your hand. Finish with cool air to keep your hairstyle longer.



See the video for how to use the product (Will go to YouTube. Video in Japanese only)



### For next use

- Rinse the product from the bottle and dispenser head after use.
- **Gloves** should be washed and dried well and **stored for future use**.
- If your hair becomes brownish or lighter, shorten the interval between uses.