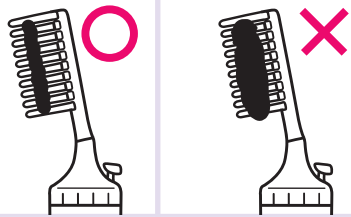




Instructions for Use

- This is not a hair color product.
 - If the foam gets on the scalp, hands, or skin, it will be difficult to remove the stain.
- Carefully read to the end and follow the instructions.

- Gently press the button to release a small amount of foam to use.
- If too much foam is dispensed, it may run off from the comb or color the scalp.



Usage precautions for this product and exclusive remover

- Do not use the product on problem areas with wounds, swelling or rashes.
- Pay close attention while using the product to see if your skin experiences problems. Stop using the product if it does not suit your skin.
 - ① If you experience redness, swelling, itching, irritation, loss of color (e.g. white blotches) or darkening during use
 - ② If the above conditions appear after your skin is exposed to direct sunlight
 We recommend you consult your dermatologist. Continuing to use the product may worsen these symptoms.
- Use caution to avoid the foam and exclusive remover from getting in your eyes while rinsing off from hair. If the product gets in your eyes, do not rub, and rinse well immediately with plenty of cold or warm water for at least 15 minutes and immediately consult an ophthalmologist.
- Do not use the product on parts other than head hair, such as eyebrows and eye lashes.
- Do not use the exclusive remover on parts other than the skin.
- Carefully select the place to store the product in order to prevent children, people with dementia and others from accidentally swallowing the product.

Kao Corporation

1-14-10 Nihonbashi Kayabacho,
Chuo-ku, Tokyo 103-8210

Precautions before using temporary hair dye products

Caution!

Pay attention not to color the scalp, hands, or skin. (particularly short hair areas and roots)

To prevent the product from getting on the scalp

- Do not dispense foam with the comb in your hair.
- Do not dispense too much foam.
- Do not rub foam into the scalp.

To prevent the product from getting on hands and skin

- Generously apply oil-based skin cream around the face (forehead, hairline), neck, ears and the back of your ears.
- Always wear gloves during use, including when rinsing hair and washing the comb.

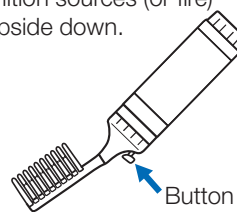
In case the product gets on the scalp, hands or skin

- If foam gets on, **immediately wipe off gently with a tissue paper or towel.** Over time, it becomes harder to remove the stain.
- If color remains, rinse off with soap.
- If it is difficult to remove with soap, etc., moisten a cotton pad with an appropriate amount (0.5 ml: the size of a 1 yen coin) of the **exclusive remover** and **wipe off by tapping lightly and not rubbing.** Wipe with a wet towel or rinse with water after use.
 - * If it is difficult to remove, leave a cotton pad moistened with the exclusive remover on skin for about 3 minutes, then gently wipe off. If it does not come off at once, repeat several times.
 - * For the scalp, it is convenient to fold a cotton pad and pinch it between fingers or use a cotton swab.
 - * If the color has been on for a long time, it may not come off immediately even with the exclusive remover.

Do not rub it off as this may damage your skin. If any color remains, it will naturally fade away after a few days of shampooing and bathing.

Cautions for storage and after use

- If alkaline solution such as mold remover gets on the bottle, rinse thoroughly. If left as it is, the bottle may become damaged and the contents may leak.
- When disposing, drain gas outdoors away from ignition sources (or fire) by pressing the button with the container turned upside down. (The container is plastic)
 - * Be careful as some foam may splatter out.
- **Do not puncture the bottle.**
- Do not disassemble the container. Foam may splatter and stain clothing.



The hair dyeing process is different from that of hair color products. Please read instructions even if you have previously used hair color products.

Caution!

Be careful not to color clothing, furniture, floors, mirrors and bathtubs.

If product colors surfaces

- For clothes and towels, wash immediately. If it is difficult to remove, we recommend using bleach.
- If it gets on walls, floors, furniture, mirrors, bathtubs, bathrooms, etc., the color will be difficult to remove. If the product got on surfaces, **immediately wipe off or rinse off.**

- * The product may not come off from some clothing, wall, furniture and mirror materials.
- * Do not use the exclusive remover on these surfaces.



The color will fade when the product is used on wet hair.

- When towel-drying after shampooing
- When sweating or wet from rain
- After swimming in the pool or beach
- Styling products, hair growth products that make your hair wet, etc.

To prevent the product from getting on clothes, etc.

- While your hair is wet, wrap a clean towel that you don't mind staining around your neck to prevent the product from getting on clothing. Once the hair is dry, there is no need to worry about color transfer.
- When going to bed, dry your hair thoroughly and protect your pillow with an old towel.

Caution

Placing the product near a fan heater, bathtub, etc., or leaving it in an automobile for an extended period of time may cause the temperature to rise and the product to explode. Do not store the product in high temperatures or under direct sunlight.

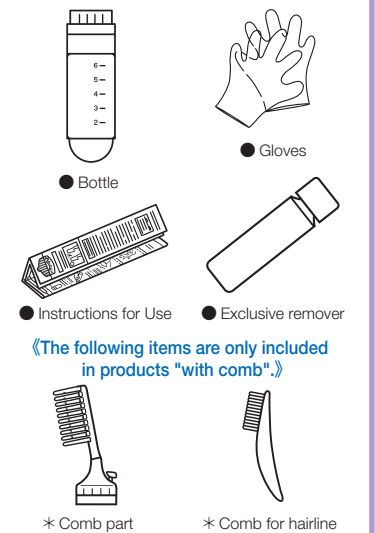
Other cautions

- Perming after use may cause the colorant to come off. **Finish perming by the day before use.**
- Avoid use if you have an important upcoming event. It is recommended to use the product two to three days beforehand in case it stains your skin.
- Avoid using the product in public bathrooms, etc., as it may cause inconvenience to others around you due to staining, etc.

For inquiries and opinions on the product
Kao Consumer Communication Center ☎ 0120-165-692
 2-1-3 Bunka, Sumida-Ku, Tokyo 131-8501
<http://www.kao.co.jp/blaune/>

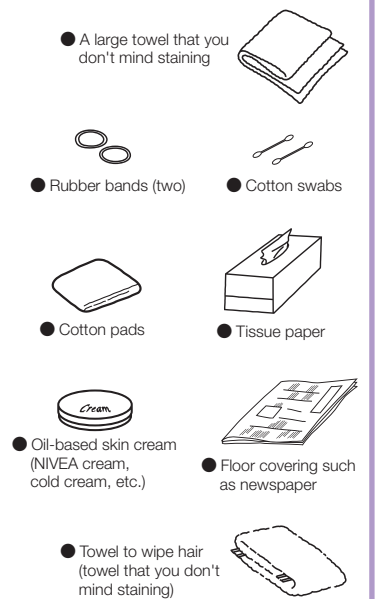
Preparation

Items included in the box



《The following items are only included in products "with comb".》

Items not included in the box



NIVEA is a registered trademark of Beiersdorf AG, Germany.

How to Use

Preparations before Application **Get yourself ready. Make sure to use on dry hair.**

- When your hair is very dirty or has a large amount of hair styling product applied, the product may lose its effect. Shampoo and dry your hair before use.
- To keep hair out of your face, comb all your hair towards the back before use.
- Guard up to your neck with a large towel.
- Wear open-fronted clothing that can be easily taken off and you don't mind staining.
- Place newspaper, etc. on the floor before use to prevent staining.



Caution To avoid coloring hairline, hands and skin

● Apply oil-based skin cream

Generously apply oil-based skin cream around the face (forehead, hairline), neck, **ears and the back of your ears.** (This allows easy removal)

● Make sure to wear gloves

Put rubber bands on to prevent the gloves from moving.



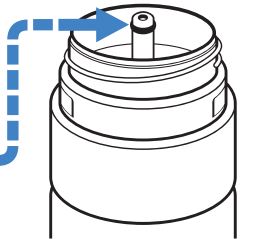
If the product colors the scalp, hands or skin

Check again for color around the face (forehead, hairline), neck, ears and back of the ears. If colored, please read "In case the product gets on the scalp, hands or skin" on the reverse side.
Do not rub it off as this may damage your skin.
If any color remains, it will naturally fade away after a few days of shampooing and bathing.

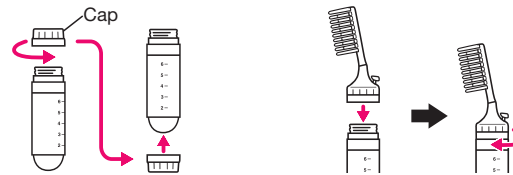
If you have difficulty feeling the effects, use a larger amount and repeat the application on another day. This will not stress hair.

For next use

- Comb part ... Make sure to wash the comb part each time. (Make sure to wear gloves) Wash as soon as possible to prevent the solution from hardening and clogging, and place it on newspaper, etc. to dry. **Not washing adequately may result in clogging or splashing of solution during the next use.**
- Bottle The black rubber ring at the top of the container can easily come off, so do not touch it when washing or wiping.
- Gloves Wash and dry at the end and store for next use. The unused solution and exclusive remover can be used as is next time.



1 Assemble the bottle.

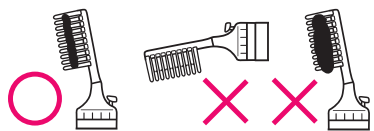


- ① Remove cap and attach it to the bottom of the bottle to make a base.
- ② Attach the comb part on the top of the bottle and close tightly and firmly.

- ★ Make sure to attach the **comb part made exclusively for this product.**
- * The previous version of the comb part (in gray) can also be used.

2 Shake the container firmly up and down at least 20 times before use. Stand the container up straight and gently press the button to release a small amount of foam.

Stand container upright to dispense a small amount

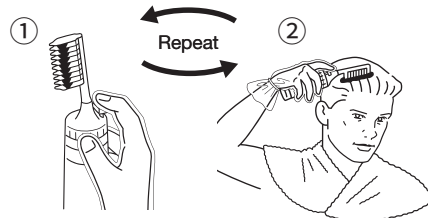


- Pressing the button while tilting causes only the gas to come out, and prevents full usage of the product.
- Releasing too much foam may cause dripping or color the scalp.



Press the button away from your eyes.

3 Blend in the foam while combing hair.



- ① Stand the container upright and gently press the button away from your eyes to see that a small amount of foam is dispensed.
- ② Blend in the foam while combing hair.

Caution Pay attention not to get the foam onto the scalp, hands, or skin. (particularly short hair areas and roots)

- **Do not rub foam** into the scalp.
- **Immediately wipe off with a tissue paper etc.** if the product gets onto skin or hands. Over time, it becomes harder to remove the stain.

How to use the comb for hairline



- ① Lightly press the button on the bottle to release a very small amount of foam, and transfer the foam to one side of the comb for hairline.



- ② Apply the foam around the roots of the hairline, making sure that the foam does not touch the skin.

Appropriate usage amount

For the entire hair about "2 marks" indicated on the side of the bottle

- Start by applying on visible gray hair.
- Use the comb for hairline for areas with short hair such as the fringe.
- While looking in the mirror, apply generously until hair looks wet.
- * Brush hair vertically, horizontally, and sideways to avoid leaving out areas.
- Do not allow hair that has foam on it to touch the skin.
- Do not press the button to release foam when combing.
- If only loose foam or gas begins to appear, stop use. The product may splatter.

4 Leave on for about 15 minutes.

Check that there is no foam on your hands or skin, or that they are not colored

- Immediately wipe off with a tissue paper, etc. if you see foam.
- If color remains, rinse off with soap before shampooing. If it is difficult to remove with soap, etc., use the exclusive remover that comes with the product to facilitate removal.

For detailed instructions, please read "In case the product gets on the scalp, hands or skin" on the reverse side.

5 After rinsing, shampoo and condition. Thoroughly dry your hair.

Make sure to wear gloves to prevent coloring hands

- Rinse well until the color of rinsing water is gone.
- Shampoo your hair twice, thoroughly.

Use caution to avoid the foam from getting in your eyes while rinsing off.