



This product dispenses foam by pressing the bottle. Carefully read the instructions for use.

- ★ Carefully read to the end and follow the instructions to use.
- ★ In rare cases, hair colors can cause severe allergic reactions.
- ★ Be sure to perform a skin allergy test (patch test) before each use.

DO NOT USE this product if you have ever experienced irritation caused by a hair color product.

Cautions

1. DO NOT USE this product if any of the following apply.

- You have ever experienced irritation caused by a hair color (including this product or another product)
- You have ever experienced hives (itching, rash, redness) or become sick (difficulty breathing, dizziness, etc.) during or after using a hair color
- You felt a problem with your skin after performing the skin allergy test (patch test)
- Your scalp or skin is sensitive (during or while recovering from an illness, during menstruation, pregnancy, etc.)
- You have swelling, wounds or a skin condition on your head, face or neck
- You have a history of kidney disease or blood disease
- You continue to experience poor health conditions (slight fever, fatigue, palpitations, shortness of breath, purpura, frequent bleeding, extended menstruation, etc.)

2. Precautions before use

- Before each use, make sure to perform a skin allergy test (patch test) 2 days (48 hours) in advance in accordance with the instructions on the right.

The purpose of a patch test is to see whether hair color causes irritation to your skin. Observe the test area twice, approximately 30 minutes and 48 hours after applying the tester. Even if you may have colored your hair many times before without experiencing any irritation, changes in body conditions may cause irritation to occur. So, perform a patch test, without fail each time.

- Do not use the product for purposes other than head hair coloring. This product is intended for use on head hair.
- Do not use on eyebrows or eye lashes as the cream may come into contact with your eyes.
- Do not use the product immediately after shaving your face as your skin might have fine scratches and be sensitive.
- Avoid perming within one week before or after use as this may damage your hair or cause the colorant to come off.

3. Cautions during use

- Start application immediately after mixing the creams.
- Use the product in a well-ventilated area.
- Make sure to wear the gloves included in the box.
- Do not bathe during use or wet your hair before use as the solution may get into your eyes by being carried in sweat or droplets.
- Avoid getting the solution on your face, neckline, etc. Immediately rinse off with water if the solution gets on skin.
- Pay attention not to let the solution or its rinsing water get into your eyes. If the solution or its rinsing water gets in your eyes, the eyes may experience severe pain or, in some cases, be damaged (cornea irritation, etc.). If the product gets in your eyes, do not rub, and rinse well immediately with plenty of cold or warm water for at least 15 minutes and immediately consult an ophthalmologist.
- If you experience any skin problems such as rash, redness, swelling, itching and severe irritation, hives, difficulty breathing, dizziness or other symptoms during use, rinse off the solution well immediately and seek immediate medical attention.
- If you experience any problem after use, make sure to consult a doctor.

4. Cautions for handling

- The unused solution mixture will lose its effect. Make sure to rinse and dispose of the bottle.
- Do not save the solution mixture. It may generate gas, causing the bottle to burst.

5. Storage precautions

- Keep the product out of reach of infants or young children. There is a risk of accidental ingestion.
- Store the product away from high temperatures or direct sunlight.

* Do not use the product on infants or young children.
* Carefully select the place to store the product in order to prevent people with dementia and others from accidentally swallowing the product.
* Pay close attention while using the product to see if your skin experiences problems.
Stop using the product and consult a dermatologist if it does not suit your skin, if you experience redness, swelling, itching, irritation, loss of color (e.g. white blotches) or darkening during use, or if the above conditions appear after your skin is exposed to direct sunlight. Continued use may worsen these symptoms.



Caution

DO NOT USE this product if you have ever experienced irritation caused by a hair color product.

- You have ever experienced irritation caused by a hair color product
- You experienced a skin reaction in the patch test

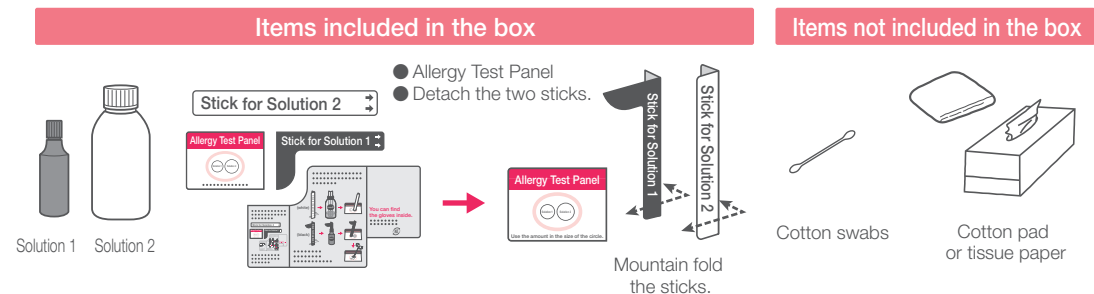
Please consult with the following contact before use.

For inquiries and opinions on the product
Kao Consumer Communication Center ☎ 0120-165-692
2-1-3 Bunka, Sumida-Ku, Tokyo 131-8501
www.kao.co.jp/liese/color/

How to conduct the Skin Allergy Test (patch test)

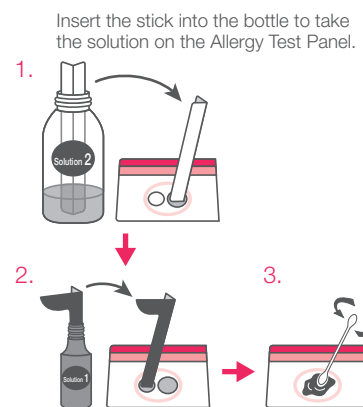
The purpose of a patch test is to see whether hair color causes irritation to your skin. Even if you may have colored your hair many times before without experiencing any irritation, changes in body conditions may cause sudden irritation to occur. So, perform a patch test without fail each time, 48 hours before use.

step 1 Have the following items ready.



step 2 Make the mixture for patch testing.

- Insert the white stick for Solution 2 to the bottom of the white bottle, and apply the solution inside the corresponding circle (Solution 2) on the Allergy Test Panel. Add a couple of dabs until the entire circle is filled.
- Insert the black stick for Solution 1 to the bottom of the black bottle, and apply the solution inside the corresponding circle (Solution 1) on the Allergy Test Panel.
※ Take the amount in the size of each circle.
- Mix well using the cotton swab.



step 3 Apply mixture onto inner side of arm and leave it on for 48 hours.

- Take the solution mixture on the cotton swab. Thinly apply an amount equivalent to 1 coin with a diameter of 2.5 cm on the inner side of the arm and let it dry naturally.
- Leave it on for 48 hours without touching. (It is important to leave the spot on for 48 hours) Do not cover the test area with a bandage, etc.
※ The part of your skin on which you have applied the product may stain, but it will disappear a few days after the patch test through regular bathing.
※ Avoid staining clothes while the solution mixture dries.
※ If the applied spot does not dry within 30 minutes, lightly wipe off with tissue paper, etc.
※ For accurate results, do not wet, rub or put a bandage on the test area for the next 48 hours. Keep bathing and showering to a minimum during the test. When unavoidable, avoid wetting the test area.

step 4 Observe the test area twice. (Approximately 30 minutes after the application and 48 hours after the application)

- If rash, redness, itching, blisters, irritation and other skin problems develop in the test area, do not rub with your hands. Wash off test mixture immediately and DO NOT use this product.
- If any of the above mentioned reactions are noticed during the test period, even if it is before the end of 48 hours, STOP TEST immediately. Wash the solution mixture off and DO NOT use this product.

step 5 Proceed to use the product only if you have not experienced any problems during the 48 hours.

If you experience any problem caused by the patch test, consult with the following contact regarding skin conditions and the product before application.

For inquiries and opinions on the product ☎ 0120-165-692
Kao Corporation 1-14-10 Nihonbashi Kayabacho, Chuo-ku, Tokyo 103-8210

Risks of developing allergy caused by hair color

Hair color induced "irritation" includes itching, swelling, redness, bumps and other symptoms on the head, roots, face, neck and other parts of the skin. Some people may only experience itching. If you repeatedly use the product because you have not noticed irritation or because the symptoms are mild, or after the symptoms disappear, they may become more severe each time. In rare cases, this may lead to sudden occurrence of a severe allergic reaction called "anaphylaxis", which involves systemic hives, breathing difficulties, etc., that can be dangerous. DO NOT USE this product if you have experienced any of the above mentioned types of irritation.

Cautions up to the day before use

- Avoid perming within one week before use.
- Avoid use immediately before going out. It is recommended to use the product two to three days beforehand because it may stain your skin.
- Shampoo by the day before use. If the hair is visibly dirty or has hair styling product, leave-on treatment, temporary hair color (hair color spray, etc.), or metal powder, etc. on it, thoroughly rinse off while using caution to avoid hurting the scalp.

Cautions immediately before use

- The foam will not be dispensed well when the product is cooled or warmed too much. Before mixing the solutions, keep the product at room temperature (between 20°C and 30°C) for about one hour.
- Use the product in a room with a temperature of 20 to 30°C to ensure optimal coloring performance and foam quality.
- Handle the solution with care to avoid staining of clothes, floors, carpets and walls, as stains may not come off. Place newspaper, etc. on the floor before use to prevent staining.
- Do not use metal combs or hairpins.
- Use the product in a well-ventilated area to disperse the hair-color odor.
- When it is unavoidable to shampoo on the same day, dry your hair before use. Wet hair may cause the colorant to drip or reduce its effect.

Preparations before Application

step 1 Check the items you need.



step 2 Get yourself ready.

- Take off glasses, contact lenses, earrings, necklaces, rings, etc.
- Change into an open-front shirt, etc. you don't mind staining and wrap the cape or towel around your neck.
- Make sure to comb your hair before use to prevent tangling. No need for hair sectioning.
- Apply oil-based skin cream to your face (forehead, hairline), ears, neckline, arms, etc. so you can easily remove the foam (solution mixture) in case it gets on your skin.
※ Avoid getting the oil-based skin cream on your hair as this may reduce the coloring effect.



- This product is not for gray coverage.
- This product is not for root touch ups.
- Using the product on strongly bleached or damaged hair may result in a differently colored finish.
- One box of the product is enough to color mid-length hair (extending to the shoulders to underarms).

Cautions to avoid getting foam (solution mixture) in the eyes



This product may get into and damage eyes if dispensed as loose foam or liquid. Pay attention not to let the solution get into eyes by being carried in sweat, droplets or rinsed-off solution.

- Make sure to use on dry hair as wet hair may cause the solution to drip.
- Avoid use while bathing as there may be dripping of sweat or droplets.
- Before use, prepare tissue paper or other materials to wipe your face to prevent the product getting in your eyes in case the foam or solution mixture trickles down your forehead during use in sweat, etc.



How to Use

- Before each use, make sure to perform a skin allergy test (patch test) 2 days (48 hours) in advance in accordance with the instructions on the back.
- Before use, make sure to read the instructions on the back. Photos and illustrations are for illustrative purposes only. The actual foam and solution colors may appear different to the photos.

Check the website for How-To-Use video.

www.kao.co.jp/liesecolor/

Liese

Search

Carefully read to the end and follow the instructions before use.



This product may get into and damage eyes if dispensed as loose foam or liquid. Pay attention not to let the solution get into eyes by being carried in sweat, droplets or rinsed-off solution. If the product comes out as loose foam or liquid, **do not apply to your hair.** Carefully read "HELP" on the right.

- The foam will not be dispensed well when the product is cooled or warmed too much. Before mixing the solutions, keep the product at room temperature (between 20°C and 30°C) for at least an hour.

1. Prepare mixture just before using.

※ Color of the mixture differs from the final hair color. It may become a dark purple or brown shade, but this change of color does not affect the final hair color result.

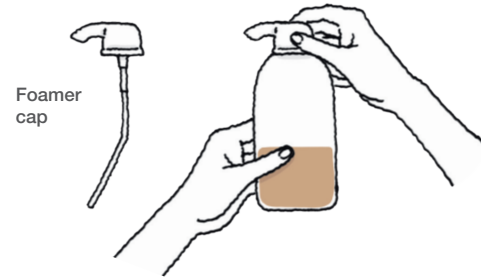
- 1 Remove the flat cap of Solution 2 and pour all the contents of Solution 1 into the bottle of Solution 2. Then close the flat cap again. **Start blending the content right away by turning the bottle upside down then back. Repeat five times, for one second each time.**



※ Do not add the Rinse-off Treatment that comes with the product into this mixture.

※ DO NOT put on the foamer cap at this point.

- 2 Remove the flat cap from the Solution 2 bottle and replace it with the foamer cap. Twist it until it is tightly sealed.



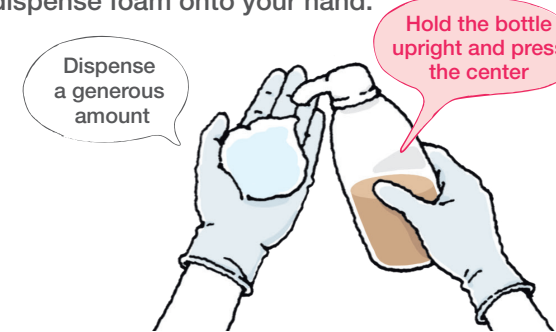
Do not shake the bottle. It may not dispense as foam if the mixture bubbles inside the bottle.



- Once you mix the solution, color your hair immediately. The mixture will lose its effect after 60 minutes.
- Leaving the bottle with the mixture inside may generate gas, causing the solution to overflow or the bottle to burst.

2. Dispense foam onto gloved hand.

Make sure to wear gloves to prevent coloring hands. Press the center of the bottle in its upright position to dispense foam onto your hand.



- Do not shake the bottle and lather the content.
- Do not apply product if it comes out as loose foam or liquid.

3. Spread a generous amount of foam over the whole of your dry hair and rub it in.



- Take care not to rub scalp too hard with your fingers.
- If the foam mixture gets onto skin, wipe off immediately with damp tissue paper, etc. Over time, it becomes harder to remove the stain.
- If you experience problems such as itching and rashes, hives, difficulty breathing, dizziness and other symptoms during use, immediately rinse off the solution well and seek medical attention.

Within 20 minutes

- 1 Roughly part your hair and start applying the foam to the **root area until fully saturated.**

Appropriate usage amount

※ Hair color will not dye well if the amount used is insufficient.

For mid-length hair

Entire bottle

For short hair

About 3/4 of the bottle



Tip Cover the entire head with a generous amount of foam.



※ At the start, the foam may be absorbed in the hair and disappear, but keep applying until the entire hair is saturated.

※ For long hair, spread the foam through all the way to the ends until fully saturated. Once you have applied to your entire hair, bring your hair together.



Do not apply the foam directly from the container to hair. Foam may splatter or get into your eyes.



Use caution to avoid tangling of hair.

- Do not rub it in too hard by pressing the hair with the palms.
- Do not rub in too hard especially after you have gathered your hair at the top of your head.



Avoid hair covered in foam or foam splashing from your hair getting in your eyes.

- 2 Once an appropriate amount of foam has been applied, bring your hair together and gently massage with your fingertips.

Tip Saturate the elastic and dense foam all the way to the roots



Photos are for illustrative purposes only. The actual foam and solution colors may appear different to the photos.

4. Leave on after checking hair.

About 20 to 30 minutes
About 30 minutes for darker color

- 1 Check hair.

- Is hair tangled?
Comb with fingers to check.
- Are areas other than your hair free of the foam (mixed solution)?
Wipe off any foam (mixed solution) found on the hairline, ears, nape of your neck, or arms, etc.
※ Over time, it becomes harder to remove the stain.

- 2 Let it develop.

- For coarse or thick hair
- If you have dark hair color from before use
- If you are using this product for darker hair color and want the color to last longer, we recommend leaving the product on for 5 to 10 minutes longer to improve the coloring process.

※ The foam may disappear during the development time, but this does not affect the final result.

※ The colorant may come off sooner for extremely light colored hair or damaged parts.

- ※ If the product is about to drip, massage in again.
- ※ Do not put plastic wrap or a cap on while the product develops as this may cause dripping.

5. After rinsing the product off well, shampoo your hair. Complete with the Rinse-off Treatment that comes with the product.

- 1 When the development time is up, add warm water to your hair little by little, gently massaging by running your fingers through your hair.
- 2 Rinse well, and shampoo your hair twice, more thoroughly than usual.
 - Rinse off well to prevent color transfer to clothes, hats, pillow cases and other items.
- 3 Apply the Rinse-off Treatment that comes with the product and rinse off.
- 4 Dry with a towel you don't mind getting stained as the color might transfer shortly after application.
- 5 Thoroughly dry your hair.



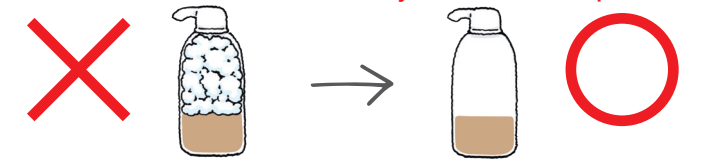
Keep your eyes closed while rinsing your hair to avoid getting the rinsed-off solution in your eyes.

HELP

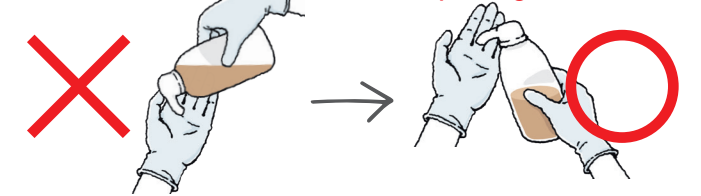
If the product comes out as loose foam or liquid...

Check the following.

- ☑ Is the bottle filled with foam?



- ☑ Is the bottle tilted when dispensing foam?



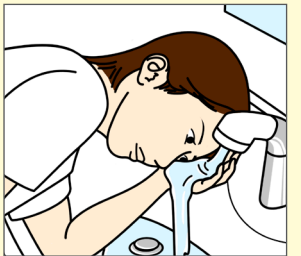
※ If the bottle still continues to dispense loose foam or liquid, do not use the product.

Contact Kao Consumer Communication Center at ☎ 0120-165-692.

If the product gets in your eyes...

DO NOT rub your eyes. Rinse your eyes immediately and thoroughly with running water (cold or warm water) for at least 15 minutes and immediately consult with an ophthalmologist **even in absence of pain or other symptoms.**

If you experience blurred vision or other problems after application, immediately rinse your eyes and seek medical attention.



If the product stains skin...

Do not rub it off too hard as this may damage your skin.

- Apply makeup remover (gel, cream, etc.) on the stain and let it sit for about 20 seconds before wiping off with tissue paper, etc.
- Then wash with lathered soap or face wash and rinse off.
- If the stain persists, gently massage soap or face wash into your skin with a cotton towel and rinse off.

Even if the stain still does not completely disappear, it will come off naturally over a few days when you wash your hair or have a bath.

※ If using makeup remover or soap, avoid getting it in your eyes.



1 The unused mixture will lose its effect. Make sure to rinse and dispose of the bottle.

2 Do not save the mixture. Leaving the bottle with the mixture inside may generate gas, causing the solution to overflow or the bottle to burst.

- ※ The unused mixture, foamer cap or bottle cannot be reused.
- ※ Lightly rinse the mixed solution off the foamer cap and bottle with water. Then dispose of them in a plastic bag, etc.
- ※ Use caution to prevent color transfer to clothes, hats, pillow cases, etc. if the following applies.

- Your hair is wet. (after sweating profusely, rain, swimming, hair washing, etc.)
- Your hair is covered in large amounts of hair restorer, hair foam or other hair products.