

ブローネ Blaunē ワンッシュカラー

Caution!

DO NOT USE this product if you have ever experienced irritation caused by a hair color product.

- You have ever experienced irritation caused by a hair color product
- You experienced a skin reaction in the patch test

Contact the following.

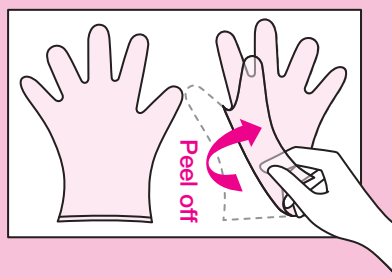
For inquiries and opinions on the product
Kao Consumer Communication Center ☎0120-165-692
2-1-3 Bunka, Sumida-Ku, Tokyo 131-8501
<http://www.kao.co.jp/blaune/>

Hair color induced irritation includes **itching, swelling, redness, bumps** and other symptoms on the head, roots, face, neck and other parts of the skin. Some people may **only** experience **itching**.

If you repeatedly use the product because you have not noticed irritation or because the symptoms are mild, this may lead, in certain rare cases, to sudden occurrence of a severe allergic reaction, which may involve systemic hives, breathing difficulties, etc. that can be dangerous. **DO NOT USE** this product if you have experienced any of the above mentioned types of irritation induced by a hair color. Even if you only had a symptom of **itching**, do not use this product if you experienced **itching** or more severe **itching** after each use.

- ★ Carefully read and follow the instructions.
- ★ In rare cases, hair colors can cause severe allergic reactions.
- ★ Be sure to perform a skin allergy test (patch test) before each use.

The gloves are attached on the back. Slowly peel them off.



Cautions

1. DO NOT USE this product if any of the following apply.

- ① You have ever experienced irritation caused by a hair color (including this product or another product)
- ② You have ever experienced hives (itching, rash, redness) or become sick (difficulty breathing, dizziness, etc.) during or after using a hair color
- ③ You felt a problem with your skin after performing the skin allergy test (patch test)
- ④ Your scalp or skin is sensitive (during or while recovering from an illness, during menstruation, pregnancy, etc.)
- ⑤ You have swelling, wounds or a skin condition on your head, face or neck
- ⑥ You have a history of kidney disease or blood disease
- ⑦ You continue to experience poor health conditions (slight fever, fatigue, palpitations, shortness of breath, purpura, frequent bleeding, extended menstruation, etc.)

2. Precautions before use

- ① Before each use, make sure to perform a skin allergy test (patch test) 2 days (48 hours) in advance in accordance with the instructions on the right. The purpose of a patch test is to see whether hair color causes irritation to your skin. Observe the test area twice, approximately 30 minutes and 48 hours after applying the tester. Even if you may have colored your hair many times before without experiencing any irritation, changes in body conditions may cause irritation to occur. So, perform a patch test, without fail each time.
- ② Do not use the product for purposes other than head hair coloring. This product is intended for use on head hair.
- ③ Do not use on eyebrows or eye lashes as the cream may come into contact with your eyes.
- ④ Do not use the product immediately after shaving your face as your skin might have fine scratches and be sensitive.
- ⑤ Avoid perming within one week before or after use as this may damage your hair or cause the colorant to come off.

3. Cautions during use

- ① Start application immediately after mixing the creams.
- ② Use the product in a well-ventilated area.
- ③ Make sure to wear the gloves included in the box.
- ④ Do not bathe during use or wet your hair before use as the cream mixture may get into your eyes by being carried in sweat or droplets.
- ⑤ Avoid getting the cream mixture on your face, neckline, etc. Immediately rinse off with water if the cream mixture gets on skin.
- ⑥ Pay attention not to let the cream mixture or its rinsing water get into your eyes. If the cream mixture or its rinsing water gets in your eyes, the eyes may experience severe pain or, in some cases, be damaged (cornea irritation, etc.). If the product gets in your eyes, do not rub, and rinse well immediately with plenty of cold or warm water for at least 15 minutes and immediately consult an ophthalmologist.
- ⑦ If you experience any skin problems such as rash, redness, swelling, itching and severe irritation, hives, difficulty breathing, dizziness or other symptoms during use, rinse off the cream mixture well immediately and seek immediate medical attention.
- ⑧ If you experience any problem after use, make sure to consult a doctor.

4. Cautions for handling

- ① The unused cream mixture will lose its effect. Make sure to rinse and dispose of the bottle.

5. Storage precautions

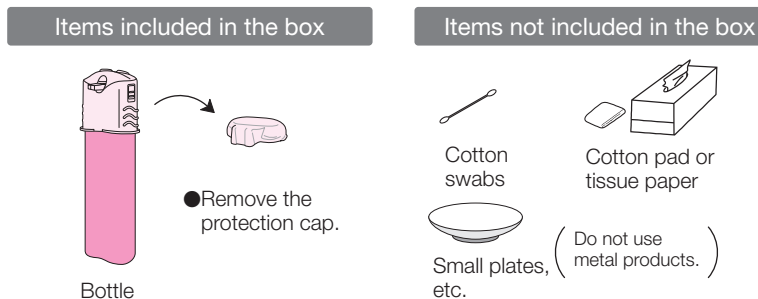
- ① Keep the product out of reach of infants or young children. There is a risk of accidental ingestion.
- ② Store the product away from high temperatures or direct sunlight.

- * Keep away from areas with temperatures of 40°C or higher.
- * Do not disassemble the container (bottle), as you will not be able to use the product.
- * Do not put the product in fire.
- * Make sure to empty the bottle before disposing of it. The nozzle and cap are plastic, and the can is aluminium.
- * Dispensed cream from the bottle cannot be saved. Make sure to rinse and dispose of the bottle.
- * Do not use the product on infants or young children.
- * Carefully select the place to store the product in order to prevent people with dementia and others from accidentally swallowing the product.
- * Pay close attention while using the product to see if your skin experiences problems. Stop using the product and consult a dermatologist if it does not suit your skin, if you experience redness, swelling, itching, irritation, loss of color (e.g. white blotches) or darkening during use, or if the above conditions appear after your skin is exposed to direct sunlight. Continued use may worsen these symptoms.

How to conduct the Skin Allergy Test (patch test)

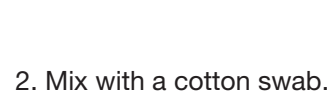
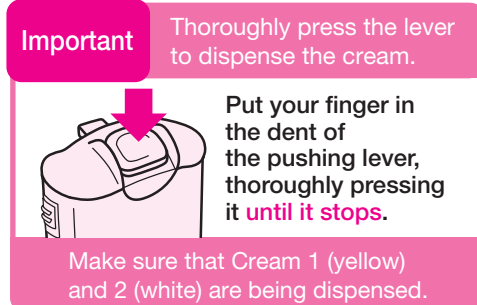
The purpose of a patch test is to see whether hair color causes irritation to your skin. Even if you may have colored your hair many times before without experiencing any irritation, changes in body conditions may cause sudden irritation to occur. So, perform a patch test **without fail each time, 48 hours before use.**

STEP 1 Have the following items ready.



STEP 2 Make the mixture for patch testing.

1. Thoroughly press the pushing lever at the top of the bottle to dispense the cream on a small plate, etc.



2. Mix with a cotton swab.

STEP 3 Apply mixture onto inner side of arm and leave it on for 48 hours.

- Take the cream mixture on the cotton swab. Thinly apply an amount equivalent to 1 coin with a diameter of 2.5 cm on the inner side of the arm and let it dry naturally.
- Leave it on for 48 hours without touching. (It is important to leave the spot on for 48 hours)
- ★ Wash the nozzle as soon as you finish applying the cream. To wash the nozzle, follow the directions on the back.
- ★ The part of your skin on which you have applied the product may become brown, but it will disappear a few days after the patch test through regular bathing.
- ★ Avoid staining clothes while the cream mixture dries.
- ★ If the applied spot does not dry within 30 minutes, lightly wipe off with tissue paper, etc.
- ★ For accurate results, do not wet, rub or put a sticker on the test area for the next 48 hours. Keep bathing and showering to minimum during the test. When unavoidable, avoid wetting the test area.



STEP 4 Observe the test area twice. (Approximately 30 minutes after application and 48 hours after the application)

- ★ If rash, redness, itching, blisters, irritation and other skin problems develop in the test area, do not rub with your hands. Wash off test mixture immediately and DO NOT use this product.
- ★ If any of the above mentioned reactions are noticed during the test period, even if it is before the end of 48 hours, STOP TEST immediately. Wash the cream mixture off and DO NOT use this product.

STEP 5 Proceed to use the product only if you have not experienced any problems during the 48 hours.

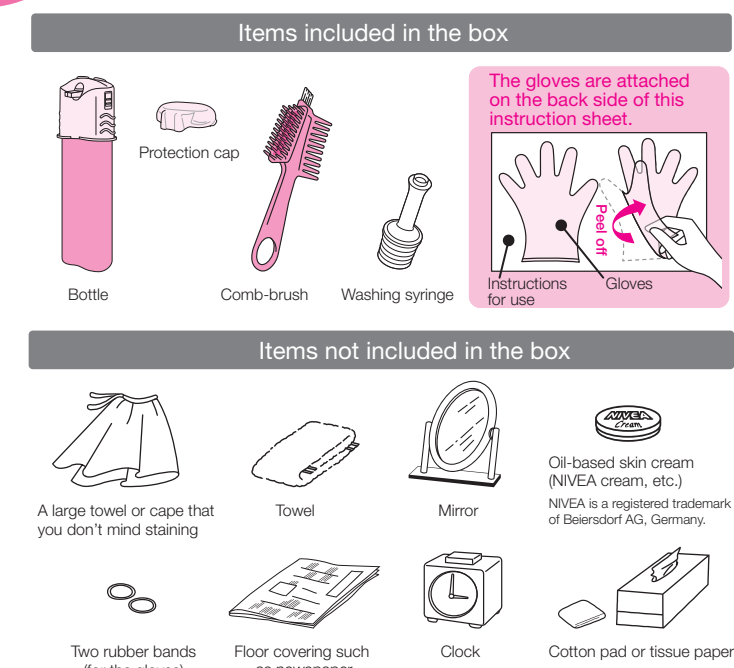
If you experience any problem caused by the patch test, consult with the contact above regarding skin conditions and the product.

Preparations before Application

Getting your hair ready

- ★ Shampoo by the day before use. If the hair is visibly dirty or has a large amount of hair styling product, temporary hair color (coloring foam, hair mascara, etc.), or metal powder, etc. on it, thoroughly rinse off while using caution to avoid hurting the scalp.
- ★ When it is unavoidable to shampoo on the same day, dry your hair before use. Wet hair may cause the colorant to drip or reduce its effect.
- ★ Perming after use may cause the colorant to come off. Avoid perming within one week before use.
- ★ If your hair is long or permed, it is recommended to comb your hair before use to prevent tangling.

STEP 1 Check the items you need



STEP 2 Get yourself ready

- Change into an open-front shirt, etc. you don't mind staining and wrap a towel around your neck.
- Thinly apply oil-based skin cream (e.g. NIVEA cream) to your ears, forehead, neckline and other hairline areas so you can easily remove the cream mixture in case it gets on your skin. Avoid getting the oil-based skin cream on your hair as this may reduce the coloring effect.
- ★ If the cream mixture gets on your skin, immediately wipe off with a cotton pad or tissue paper wet with water, etc.
- Make sure to put on the gloves and put the rubber bands on your wrists to prevent the gloves from moving.

Caution

- Excessively cold or warm temperatures may affect the dispensing performance. Before use, keep the product at room temperature (between 20°C and 30°C) for about one hour.
- Use the product in a room with a temperature of 20 to 30°C to ensure optimal coloring performance and dispensing.

- Avoid use if you have an important upcoming event. It is recommended to use the product two to three days beforehand in case it stains your skin.
- Take off glasses, contact lenses, earrings, necklaces, rings, etc.
- Place newspaper, etc. on the floor before use to prevent staining from the solution. (Stains will not come off)
- Do not use the product while bathing.
- Do not use metal combs or hairpins.

★ Handle the cream mixture with care to avoid staining of clothes, floors, carpets and walls, as stains may not come off.

For inquiries and opinions on the product
☎0120-165-692

Kao Corporation
1-14-10 Nihonbashi Kayabacho,
Chuo-ku, Tokyo 103-8210

<http://www.kao.co.jp/blaune/>

ブローネ Search

How to use

One box contains the amount for a single application for short hair (entire hair)

- Before each use, make sure to perform a skin allergy test (patch test) 2 days (48 hours) in advance in accordance with the instructions on the back.
- Make sure to read "Preparations before Application" on the back.
- Use the product in a room with a temperature of 20 to 30°C to ensure optimal coloring performance and dispensing.

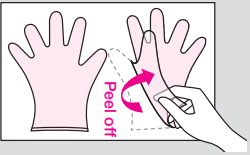
Check the website for the How-To-Use video.
http://www.kao.co.jp/blaune/
プロローネ Search

1 Dispense the cream onto the Brush part of the Comb-brush.

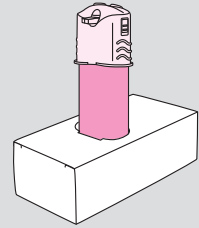
Caution! Do not dispense too much cream onto the Brush part as the cream may drip.

The gloves are attached on this side. Slowly peel them off.

★Put rubber bands on your wrists to prevent the gloves from moving.

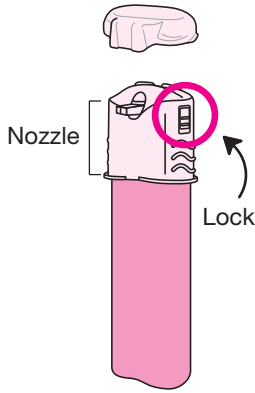


Punch out along the perforated line on the back side of the box to keep the bottle upright during use.

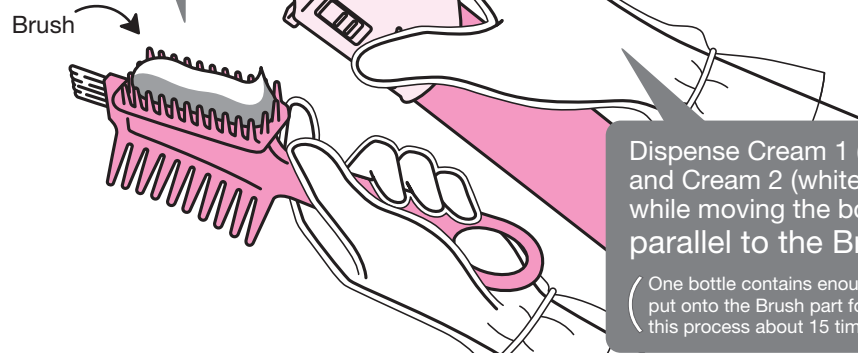


Make sure that both sides are locked before putting on gloves and applying the cream on the Brush part.

★Remove the protection cap before use.



Make sure that the cream stays inside the Brush area

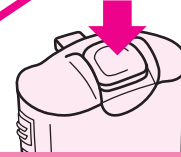


Dispense Cream 1 (yellow) and Cream 2 (white) while moving the bottle parallel to the Brush.

(One bottle contains enough cream to put onto the Brush part for repeating this process about 15 times.)

- ★Both creams are required to color hair. You may not finish both creams depending on how you apply.
- HELP** If only one side of the cream comes out, remove the nozzle and reapply it before pressing firmly on the lever's center. Please discontinue use of the product if the cream continues to come out only on one side.
- ★The cream may come out in black or brown in the beginning or end, but this does not affect the coloring effect.
- ★Color of the cream does not reflect the final hair color result. It may become a dark purple or brown shade, but this change of color does not affect the final hair color result.

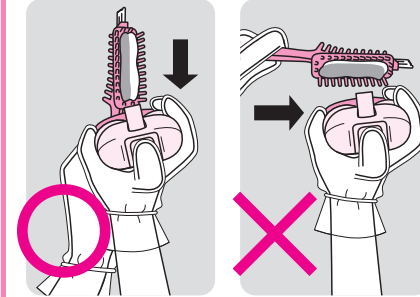
Important Hold down the lever fully.



Put your finger in the dent of the pushing lever, thoroughly pressing it until it stops.

If not pushed properly, Cream 1 and Cream 2 may not be dispensed in equal amounts, affecting the coloring performance.

Hold the Brush and Bottle at a proper angle



Make sure that Cream 1 and Cream 2 are dispensed in parallel to the brush. In case the creams are dispensed diagonally to the brush, the creams may not mix efficiently on hair, affecting the coloring performance.

2 Apply cream to dry hair.

Caution! Do not apply to hair directly from the bottle. Use caution to avoid splattering. Avoid getting the cream in your eyes. Use caution to avoid scratching your scalp with the comb. If the cream gets on skin, immediately wipe off with damp tissue paper, etc.

How to color only areas with visible gray

Application time: Within 20 minutes

Leave on time: Around 15 minutes

1 Use the Brush part to apply a generous amount of the cream to the roots of gray hair and let it fully penetrate.

Hair partings

Using the Brush part, apply a generous amount of the cream to the roots, and let it penetrate.

Hairline

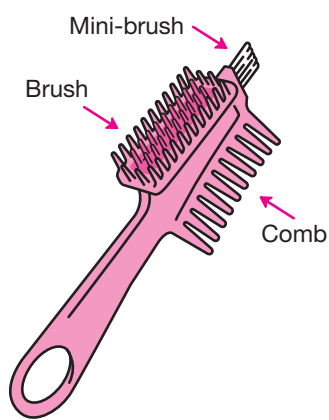
Position the brush parallel to your hairline spreading the cream towards the back.

Fine areas

Using the Mini-brush, spread the applied cream.

2 Spread the cream with the Comb part and leave it on.

★For coarse, thick or other types of difficult-to-color hair, it is recommended to leave on for 5 to 10 minutes longer.



How to part your hair



Using the tip of the Comb part, start parting from the front.



Tips for fine areas

Take the cream on the protection cap and mix with the Mini-brush before applying.

Appropriate dispensing amount



- ★Thoroughly push the lever until it stops, making sure both Cream 1 and Cream 2 are being dispensed.
- ★Do not dispense the cream directly onto the Mini-brush.

How to color your entire hair —How to do a root touch up— ※Carefully read the above instructions.

Application time: Within 20 minutes

Leave on time: Around 15 minutes

1 Using the Brush part, apply the cream to the front half of your hair.

★Part your hair starting in areas with visible gray and apply to the root area and spread until fully saturated.

2 Apply to the back half of your hair.

★Apply the cream to hair roots, while parting hair from the top of your head to the nape of your neck.

3 Using the Comb part, spread the cream all the way to the ends and let it develop.

★Wait for approximately 10 minutes without spreading the cream to help ensure an even-toned finish. After the time is up, spread the cream all the way to the ends and let it develop for another five minutes.

How to color your entire hair —If you have not used a gray coverage color before— ※Carefully read the above instructions.

Application time: Within 20 minutes

Leave on time: Around 15 minutes

1 Using the Brush part, start applying to the front half and then back half of your hair.

- While parting your hair, apply the cream from the root area and then to the middle and ends.
- Once you have applied the cream to your entire hair, spread it out evenly using the Comb part.

2 Let it develop.

3 After the development time is up, rinse well, then shampoo, condition and thoroughly dry your hair.

Shampoo your hair twice, more thoroughly than usual.

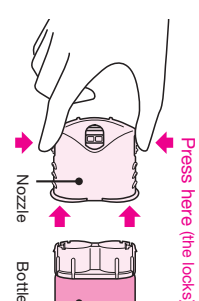
Caution! Use caution to avoid the cream from getting in your eyes while rinsing off.

The unused cream in the bottle can be used next time.

★Make sure to clean the nozzle to prevent clogging.

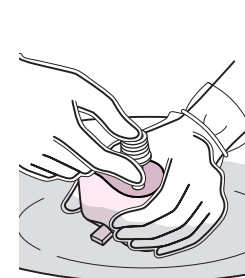
How to clean the nozzle

1 Remove the nozzle



While pressing the locks on both sides, pull the nozzle upward to detach it from the bottle.

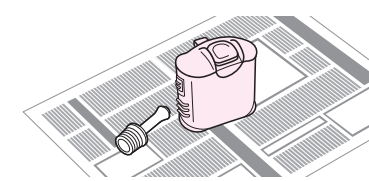
2 Clean the nozzle



Immerse the nozzle in warm water and insert the washing syringe into the hole on the back side of the nozzle. Push the washing syringe to wash the inside. Repeat the process for the other hole.

★Always immerse the nozzle under water for cleaning because the cream may splash.

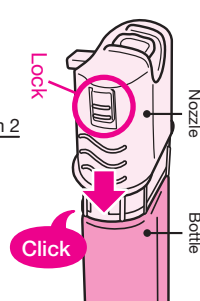
3 Dry the nozzle



★The sink may get dirty by water left on the nozzle or the washing syringe. Make sure to place the nozzle and the washing syringe on newspaper, etc. while letting it dry.

4 Reattach the nozzle in

- Push the nozzle into the bottle until the locks click.
- If the nozzle is not attached properly, the bottle may not dispense Cream 1 and Cream 2 in equal amounts next time.
- Avoid pressing the pushing lever when attaching the nozzle.



5 Store the product

- Place the protection cap on. Store away from high temperatures.
- Wash the comb-brush, washing syringe, and gloves before storing.
- A small amount of cream may come out in a dark color next time, but this does not affect the coloring effect.

★Use caution to prevent color transfer to clothes, hats, pillow cases, etc. if the following applies.
•Your hair is wet. (after sweating profusely, rain, swimming, hair washing, etc.)
•Your hair is covered in large amounts of hair restorer, hair foam or other hair products.

★Repeated root touch ups may cause an uneven coloring finish. It is recommended to color your entire hair at least once every three months.
★Make sure to empty the bottle before disposing of it. The nozzle and cap are plastic, and the can is aluminium.